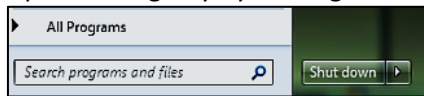


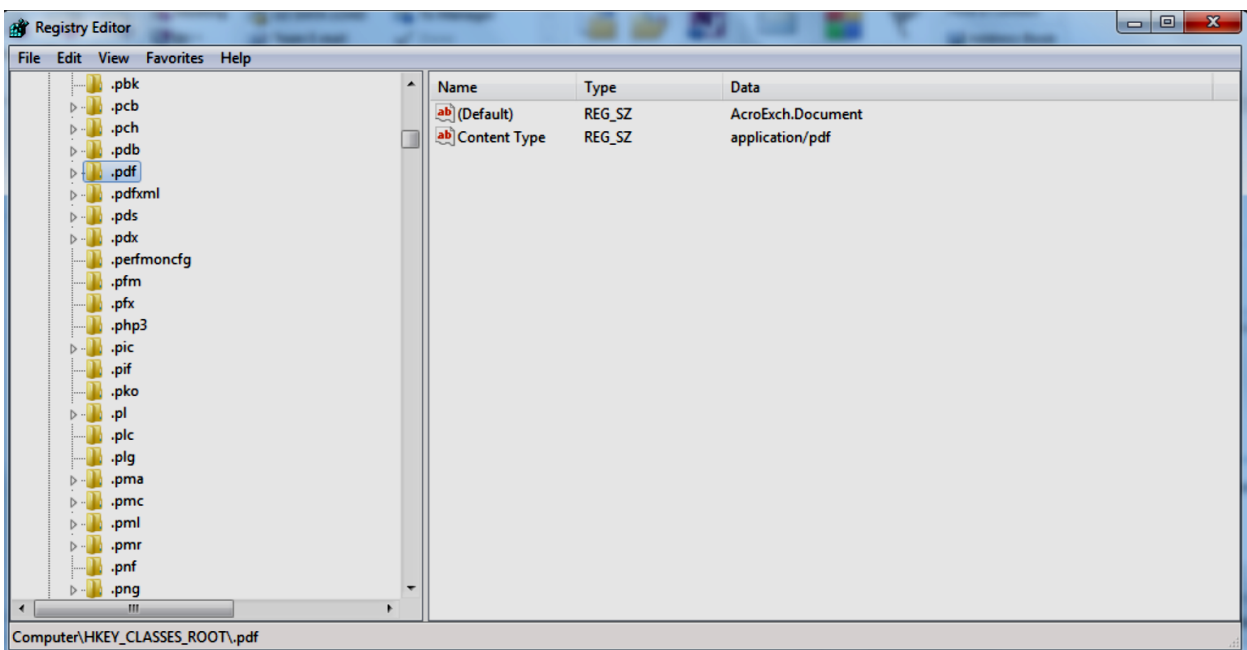
Fixing the registry for PDF drag and drop

1. Open the registry by clicking on the **START**  button and type **Regedit** into the search field.

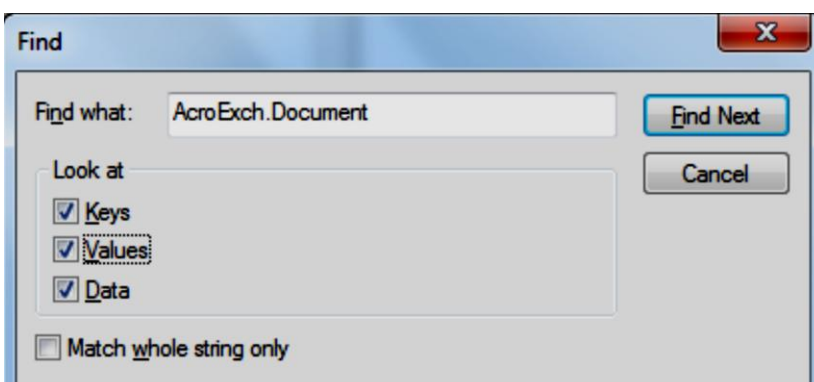


A program file will be found and listed under **Programs (1)**. Click on this file to select and open the registry

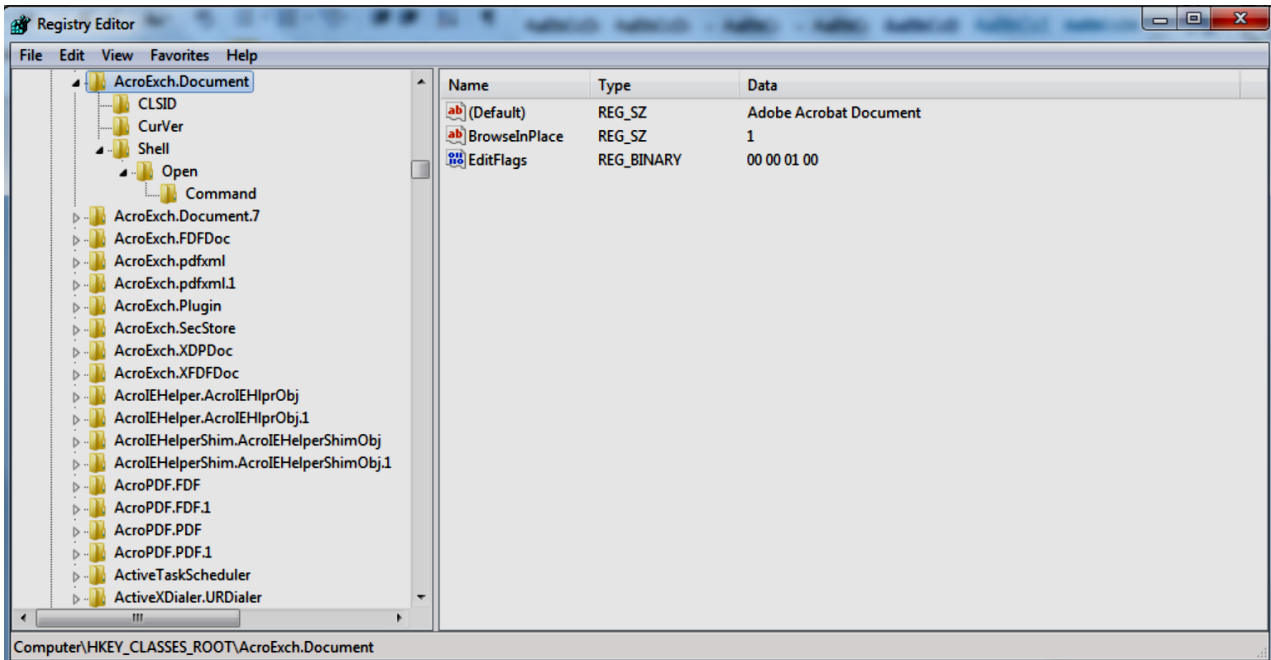
2. Now when the registry opens, click on the first major tree node HKEY_CLASSES_ROOT
3. Now press and hold CTRL and hit key: F for search options. Enter **.pdf** to search for this 'Key' – the screen below displays when the key is found and highlighted in the left pane. In the right pane, the default **AcroExch.Document** value is found. It could also be **pdf_auto_file**
4. Double click the {Default} in the right pane to open a text control field and highlight and copy (with CTRL +C) **AcroExch.Document** (or **pdf_auto_file** as appropriate)



5. Now do a new CTRL +F search using the value AcroExch.Document (or any other value that appears under {Default}).

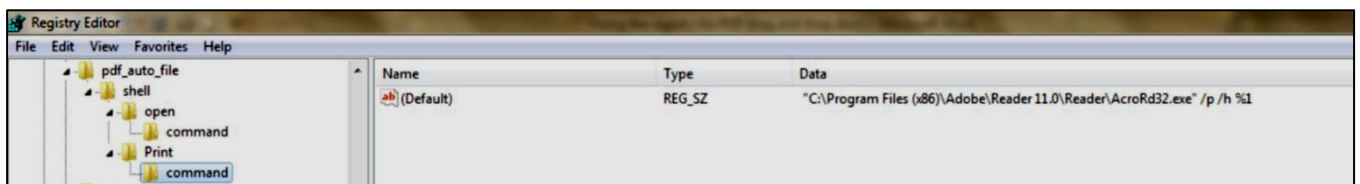


6. When this Key is found in the left pane, open all nodes in the tree and find the SHELL key.
7. Under SHELL, there should be 2 Keys – OPEN and PRINT. In the image below, PRINT is missing. Because this key is missing, the 'Drag and Drop' does not work.



8. To create a PRINT Key (similar to a folder in Explorer), right click on the SHELL key and select NEW-->Key: Give the Key a name of PRINT. Then similarly, right click on PRINT and create a NEW->Key: COMMAND
9. Now double click SHELL/PRINT/COMMAND; The right pane should have one line entry VALUE called {Default}. Double click this value and enter the SAME path that is shown under SHELL/OPEN/COMMAND/{Default}
"C:\Program Files (x86)\Adobe\Reader 10.0\Reader\AcroRd32.exe" "%1"
10. But you need to modify this line to include a /p /h before the "%1" as follows:
"C:\Program Files (x86)\Adobe\Reader 10.0\Reader\AcroRd32.exe" /p /h "%1"

Here is an image which shows the correct settings:



11. Now click OK and ensure the value in the right hand pane is updated. Now ensure that this path is where the AcroRd32.exe (Adobe Reader) program file is found.
12. Now try the drag and drop.