

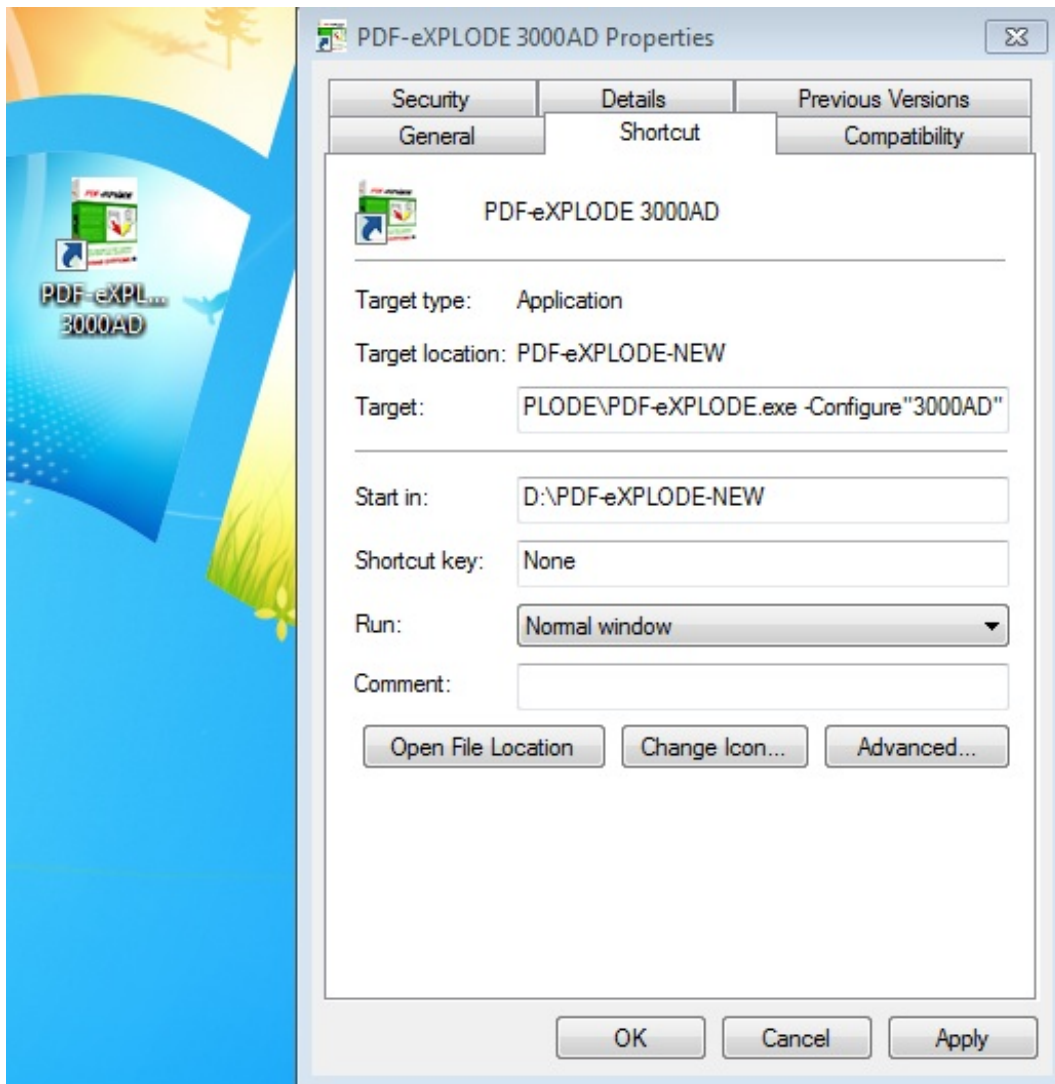


How can I view the PDFeXPLODE configuration for another User on my PC?

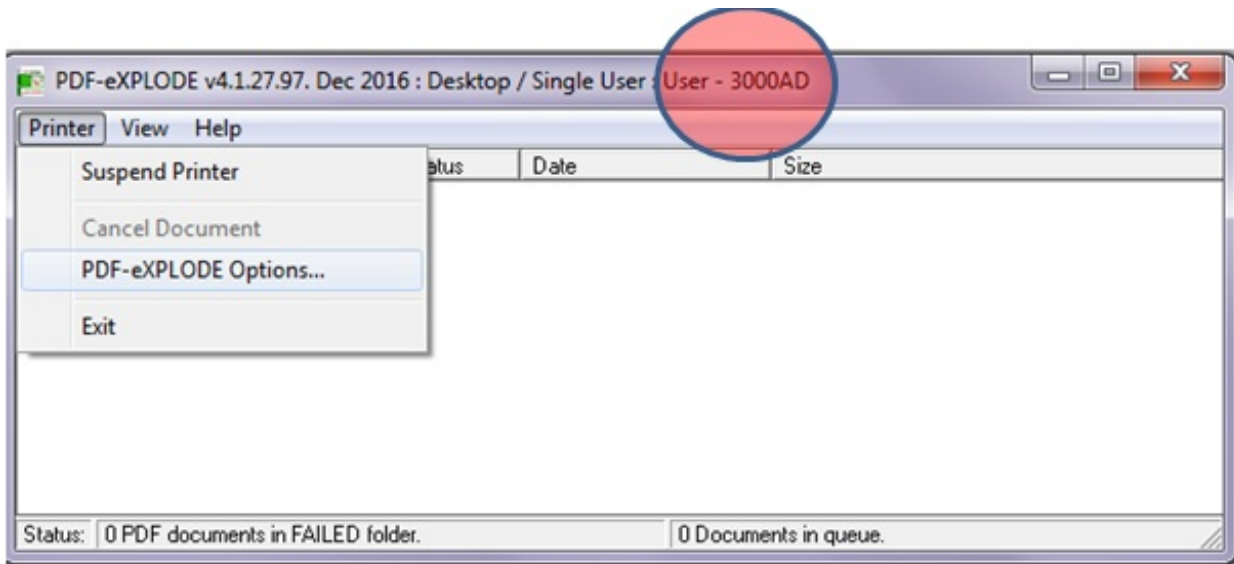
Article Number: 77 | Rating: Unrated | Last Updated: Wed, Jan 25, 2017 at 3:51 PM

Here is a tip which can assist you in viewing any User or Client (if you are an external support organisation) PDFeXPLODE INI on your PC

1. Make a folder with a one word name for the User or Client under INIs sub-folder: example "3000AD" path- **[installed folder]\INIs\3000AD**
2. Place the pdfexplode.ini, received from the client in this sub-folder
3. Right click on PDF-eXPLODE.exe and select "Create Shortcut" from the menu.
4. Rename this shortcut to PDF-eXPLODE_Client_3000AD (for example)
5. Right click on shortcut and select PROPERTIES
- 6.



7. Edit the TARGET to be **[installed folder]\PDF-eXPLODE.exe -CONFIGURE"3000AD"** (one space after EXE, + "-" + 'CONFIGURE' + sub-folder name within double quotes **without any spaces**)
8. Open the shortcut and on the main menu caption bar it will show "User – 3000AD"



Posted - Thu, Jan 19, 2017 at 5:46 AM. This article has been viewed 726 times.

Online URL: <http://kb.pdf-explode.com/article/how-can-i-view-the-pdfexplode-configuration-for-another-user-on-my-pc-77.html>