
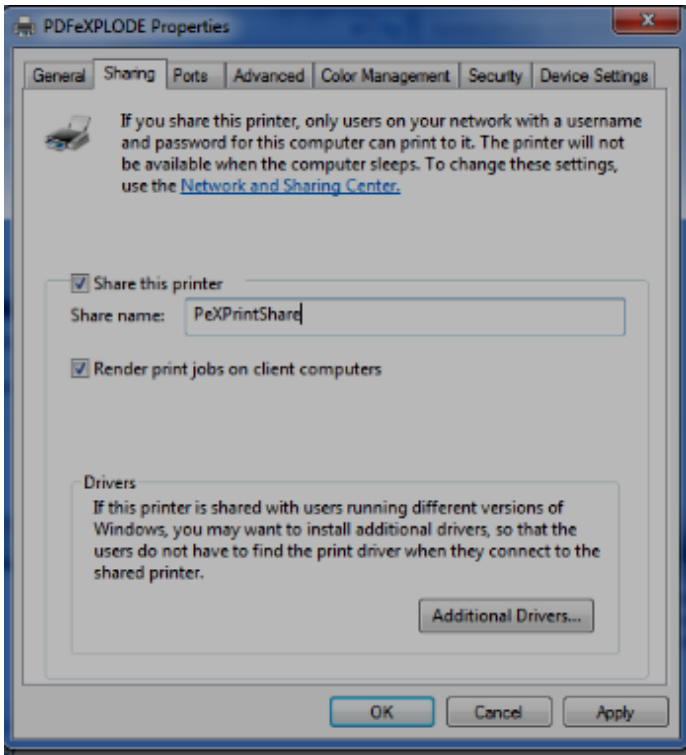


How to add a PDF-eXPLODE Shared Printer to a workstation connected to a Server

The server PDFeXPLODE installed printer must first be shared. This may have been done already as part of the PDFeXPLODE server installation instructions. If not done then, go to the server and select *Printers and Faxes* from the Start menu.

 *If using Win 7 or Vista, this may be called 'Devices and Printers', whereas under Win 2008 this will be located as 'Printers' under Control Panel.*

Now right click on the PDFeXPLODE printer icon and select '*Printer Properties*' from the popup menu. On the screen that opens, select the '*Sharing*' tab. Now check the box 'Share this printer' and give it a name like '*PeXSharePrinter*' or any other appropriate name. To avoid confusion when



sharing this printer to workstations over the network, please name the shared printer anything but PDFeXPLODE. Please also check the box '*Render print jobs on client computers*'.

This completes the PDFeXPLODE server configuration.

The following scenarios exist when sharing a PDFeXPLODE Server printer across the network:

Scenario 1:

The **Server processor and workstation processor are both the same type:** i.e. they are either 32 Bit or 64 Bit. In this case the PDFeXPLODE print driver and registry settings are identical on both systems so the following is done to connect the workstation to the server:



1. From the *Printers and Faxes* select **Add a Printer** and the screen that follows, select **Add a network printer**.
2. Select PDFeXPLODE or *PeXSharePrinter* (whichever name appears) from the list of available network printers and click **NEXT** to complete the PDFeXPLODE installation on that workstation.
3. Now go to section “Configuring the PDFeXPLODE Workstation printer driver to complete the installation
4. Once done, right click on the workstation PDFeXPLODE printer icon, select Properties (Win XP) or Printer Properties (Win 7) and click **Print Test Page**. Allow one minute and then go to the Server and look for the PDF output created under PDF-eXPLODE program folder\PDFS. The output will show the workstation ID and it’s printer driver properties. **This must be clearly legible in color. (If not, go to Configuring the PDF-eXPLODE workstation... Pg 3)**
5. You are now all done

Scenario 2:

In this scenario, **the Server and workstation processors are of different processor types** i.e.: Server may be 64 Bit and the workstation 32 Bit or Server is 32 Bit but the workstation is 64Bit. Due to the differences in the processor type, the Server’s print drivers cannot be copied to the workstation (as in scenario 1). Hence you must do the following:

64 bit PDF-eXPLODE PRINT DRIVER

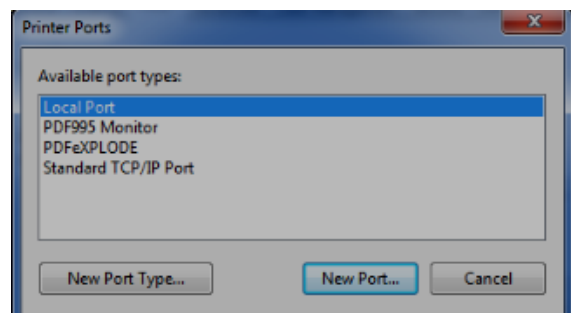
1. Install the full **64 bit PDF-eXPLODE PRINT DRIVER** software on the workstation if your workstation is 64 Bit and the server is 32 Bit. The download link is here:
[http://www.3000ad.com.au/evaluations/PDF-eXPLODE Printer Setup PD 64B V2 0 0.exe](http://www.3000ad.com.au/evaluations/PDF-eXPLODE%20Printer%20Setup%20PD%2064B%20V2%200%200.exe)
 Username: **PEXevaluation** Password: **passMENow**

32 bit PDF-eXPLODE PRINTER DRIVER

2. Install the full **32 bit PDF-eXPLODE PRINTER DRIVER** software on the workstation if your workstation is 32 Bit and the Server is 64 Bit by downloading from here:
[http://www.3000ad.com.au/evaluations/PDF-eXPLODE Printer Setup PD 32B V2 0 0.exe](http://www.3000ad.com.au/evaluations/PDF-eXPLODE%20Printer%20Setup%20PD%2032B%20V2%200%200.exe)

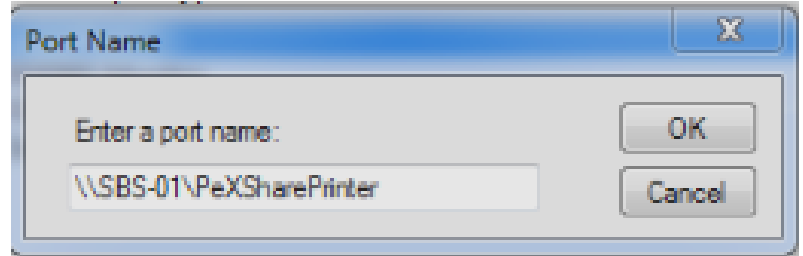
Username: **PEXevaluation**
 Password: **passMENow**

Either of the links will only install a PDFeXPLODE Printer - this installed Printer operates as a full license.



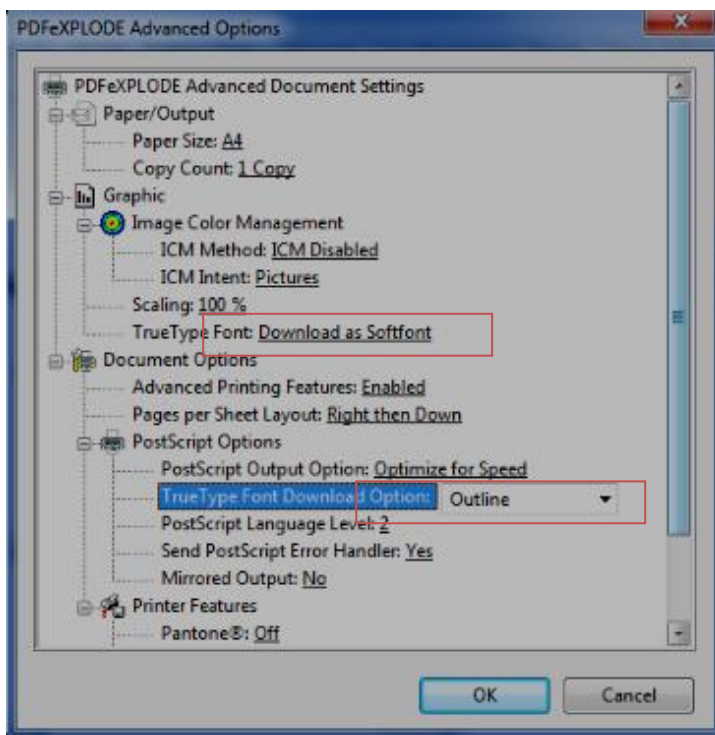


3. After installation completes, go to Printers and Faxes under the 'Start' Menu open the Printer properties by right clicking the PDFeXPLODE printer icon.
4. Go to the Ports tab. View the current setting – It will have a port called PDFeXPLODE. This is a “software” port. Click Add Port, then highlight **Local Port** in the new screen that appears, and click **New Port** button.
5. For the port name, enter exactly the network path and share name of your printer - This could be (example only):
[\\WIN2008_32B_SERVER\PeXPrintShare](#).



You can also use the IP address ([\\192.168.1.14\PeXPrintShare](#)) of the server and the shared name instead. Click OK, and check that this new port is selected with the checkbox next to it.

6. Click OK to close the printer properties.
7. Now test the printer by selecting the General tab on the Printer Properties and click **Print Test Page** button. Go to the server console and check if a PDF was created on the server. The processing could take around a minute to complete. No activity is visible on-screen as the server PDF-eXPLODE configuration is set to '*Very Silent*'. To find the PDF location, double click the PDF-eXPLODE server desktop icon and open the Printer menu/Options/General Settings. The 'Default Document Path' is where you should expect to find the PDF.



Configuring the PDFeXPLODE Workstation Printer Driver (This may not be required)

It is possible that the printed PDF output from this workstation may have problems with the font. This is due to the font rendering differences between the workstation 32 Bit processor and the server. The following MUST be done on the workstation PDFeXPLODE printer driver to ensure that correctly rendered output is sent from the workstation to the Server for PDF processing. Please follow the instructions below:

- i. Right click on PDFeXPLODE printer icon on the workstation and select



Printer Properties or just *Properties* depending on the menu option appearing

- ii. On the General tab, click **Preferences, Advanced** and click on the '+' next to **Graphic** and then **TrueType Font** and set to "**Download as Softfont**".
- iii. Next click on the **+PostScript Options** and select **TrueType Font Download Option** and set to "**Outline**". Now click OK and exit from Properties by clicking OK.